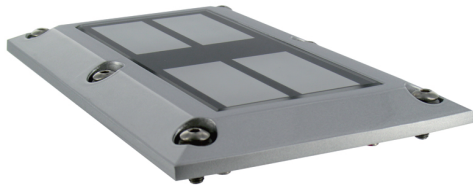
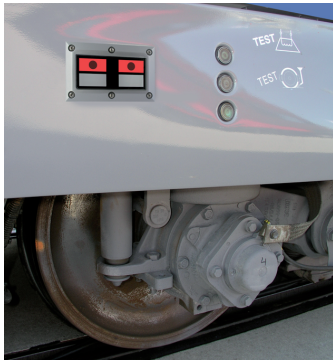




MAFELEC

Creating control and signalling solutions for harsh environments

Status of Brake Indicators



Luminous indicator system of boggie of brake status

- Red light: brake applied
- Green light: brake released

- **Tempered-glass protective glass**
- **Screen printing on request**
- **IP66 IK06**
- **Reliability**
- **Mismatch protection color blindness**
- **Adaptations available on request**

Standards:

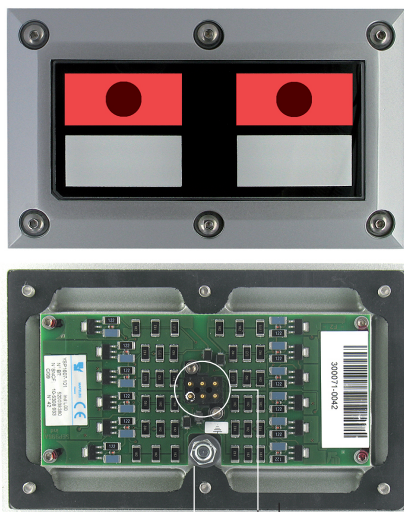
- **Application** EN 50155
- **Shocks, vibrations** EN 61373
- **EMC** EN 50121
- **Environment** EN 60068
- **Fire and smoke** EN 45545

Mechanical characteristics:

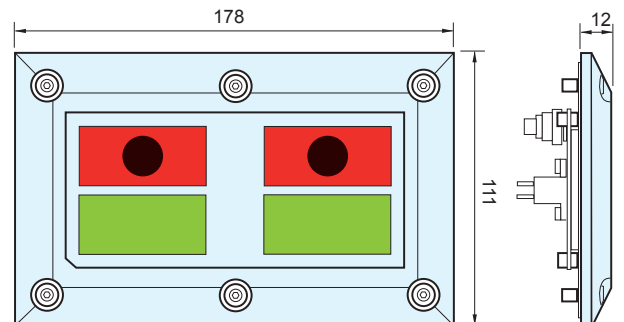
- Operating temperature: -25 °C / + 70 °C
- Very light tempered-glass protective glass of 5 mm
4 layer screen printing
- Aluminium body
- Paint 4 layers according to NFF 19141-2
- Protection: IP66 - IK06 in front panel
- Service life: >100 000 h

Electrical characteristics:

- 4 indicator lights (2 x 24 red LED and 2 x 24 green LED)
- Supply voltage: 72 V, 35 mA per indicator light
- Security:
Each indicator light is made up of three branches of LED in parallel
- Reliability:
Current limitation at 10 mA per branch
- Plug by connector



Gasket
Output 6-pin connector



AEROSPACE & DEFENCE



COACHES & BUSES



RAILWAY



INDUSTRY



ENERGY



PLEASURE BOAT



VERTICAL TRANSPORT



INDUSTRIAL VEHICLES



OFFSHORE & MINING

MAFELEC
www.mafelec.com

Textes et images non contractuels

(update 2017/06)